

CK-16 Aviation Obstruction Light

CK-16 Medium Intensity Aviation Obstruction Light Type B

Application

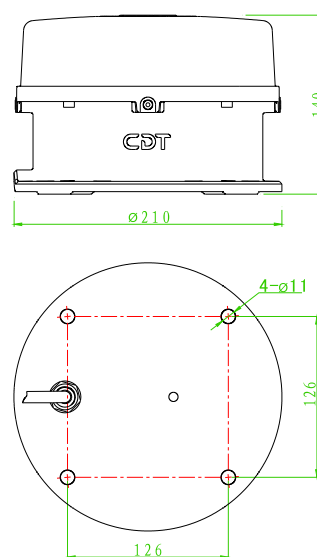
Widely used in various fields of the Air Force, civil airports and obstacle free airspace, helipads, iron tower, chimney, ports, wind power plants, bridge and city high-rise buildings where require aviation warning.

Key Feature

- Lamp shade of the light adopts PC with anti-UV which is high efficiency light transmission up to 95%, quite high impact resistance and fit the bad environment very well.
- House of the light is made of aluminum alloy and painted by spraying plastics, the structure is high strength, resistance to corrosion;
- Using parabolic reflector optical design, range further;
- Light source adopts high quality LED, low power consumption, long lifespan, high brightness;
- Based on the single chip computer control, automatic identification sync signal, do not distinguish the main light and auxiliary light, and also could be controlled by controller;
- Same power supply voltage with synchronous signal, integrate in power supply cable, eliminate the damage by error installation caused;
- Used the photosensitive probe fit for the natural light spectrum curve, automatic control light intensity level;
- The circuit of the light has surge protection whose lightning proof ability is In 7.5KA/5times, I_{max} 15KA so that the light is suitable to harsh environment;
- Integral structure, protection level of Ip65;
- Ignitability rate UL-94V0, fit for all kinds of industrial situation;



| Item | Parameter |
|------------------------------|--|
| Model | CK-16 |
| Operating voltage | AC220V |
| Power consumption | ≤10W |
| Flashing frequency | 20~60times/min |
| Light source | Red LED |
| Peak light intensity | >2000cd |
| Lifespan | >100,000hours |
| Emitting color | Red |
| Beam angle | 360° horizontal beam angle ≥3° vertical beam spread |
| Method of synchronization | Same power supply voltage signal mode |
| Overall size(mm) | Φ210mm×140mm |
| Installation size(mm) | 126mm×126mm -4×Φ11 |
| Ingress protection | Ip65 |
| Lightning protection level | 15KA |
| Light controlled sensitivity | 50Lux |
| Operating temperature | -40°C ~ 55°C |
| Net weight | 3kg |
| Wind load | 80m/sec |



CK-16 Structure chart